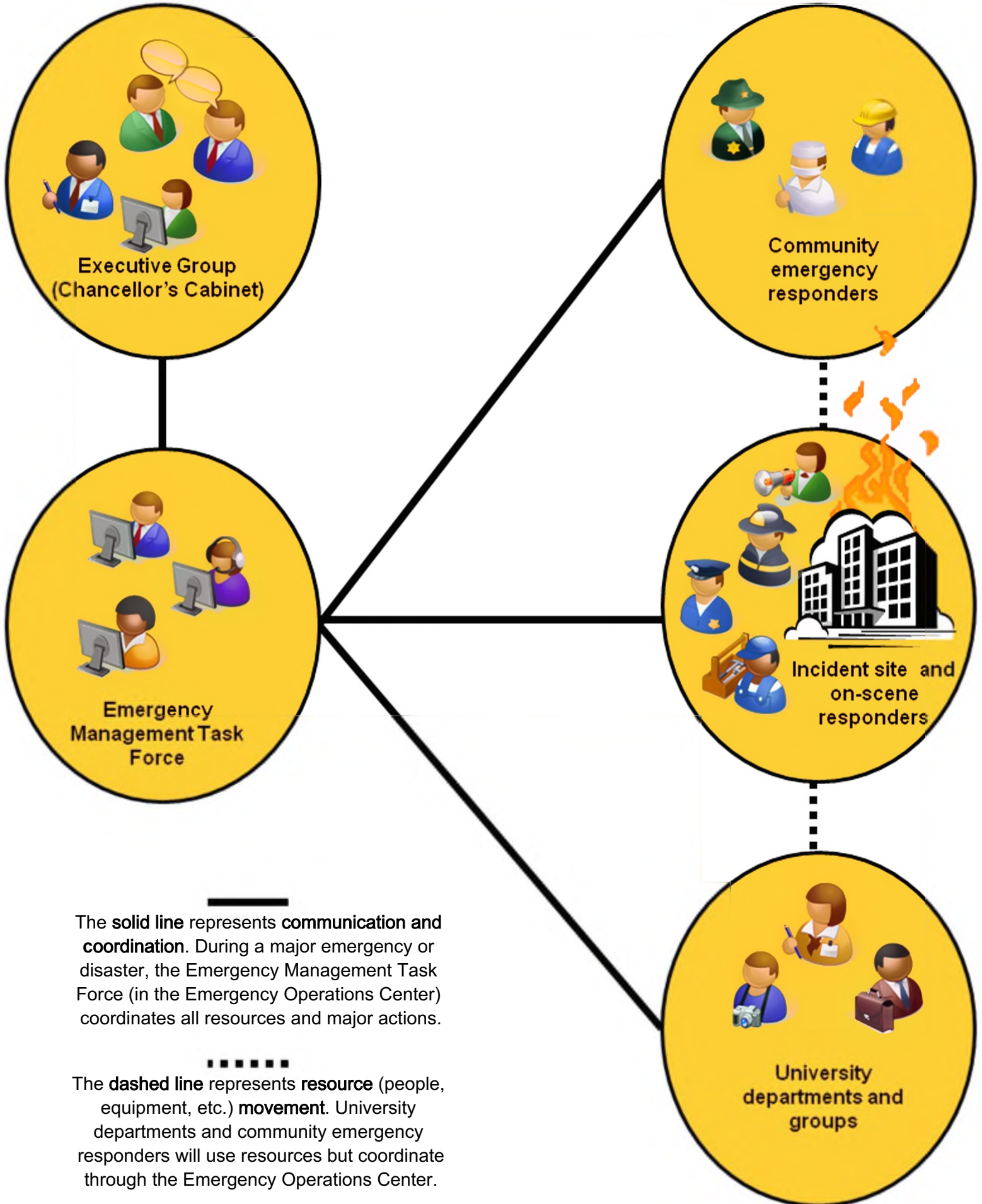


Appalachian State University

Emergency Operations During a Major Emergency or Disaster Overview



—
The **solid line** represents **communication and coordination**. During a major emergency or disaster, the Emergency Management Task Force (in the Emergency Operations Center) coordinates all resources and major actions.

The **dashed line** represents **resource** (people, equipment, etc.) **movement**. University departments and community emergency responders will use resources but coordinate through the Emergency Operations Center.